



Charismathics Smart Security Interface

Version 5.0

Linux – 32 Bit

Installation:

Copy the module (libcmP11.so) and CSSI User tool to any location you like.

Charismathics PKCS11 Library for Linux:

The library libcmP11.so was built with the gcc version 4.5 in a Fedora 14 (Linux kernel 2.6.35) environment.

Note:

- Please check the shared library dependencies of libcmP11.so on your platform.
- On 32-bit Fedora 9 the following library dependences are needed:

```
# ldd -r libcmP11.so
linux-gate.so.1 => (0x00110000)
libpcsc-lite.so.1 => /usr/lib/libpcsc-lite.so.1 (0x00111000)
libdl.so.2 => /lib/libdl.so.2 (0x0011b000)
libpthread.so.0 => /lib/libpthread.so.0 (0x00120000)
libz.so.1 => /lib/libz.so.1 (0x00139000)
libstdc++.so.6 => /usr/lib/libstdc++.so.6 (0x0014d000)
libm.so.6 => /lib/libm.so.6 (0x0023f000)
libgcc_s.so.1 => /lib/libgcc_s.so.1 (0x00268000)
libc.so.6 => /lib/libc.so.6 (0x00276000)
/lib/ld-linux.so.2 (0x003e5000)
```

Tested Operating Systems

- Fedora 14 (Linux kernel 2.6.35)
- Debian (Linux kernel 2.6)
- Open Suse 10

Supported Applications

- SSL-Authentication with smart card (Mozilla Firefox)
- PKCS#11 Interface in Mozilla Firefox
- E-Mail-Security per smart cards with Mozilla Thunderbird

Log File

If you want to create a logfile, then you should specify the environment variable SCINTERFACE with the wished filename and path.

For example:

```
#export SCINTERFACE=/tmp/cmP11.log
```

or add a line

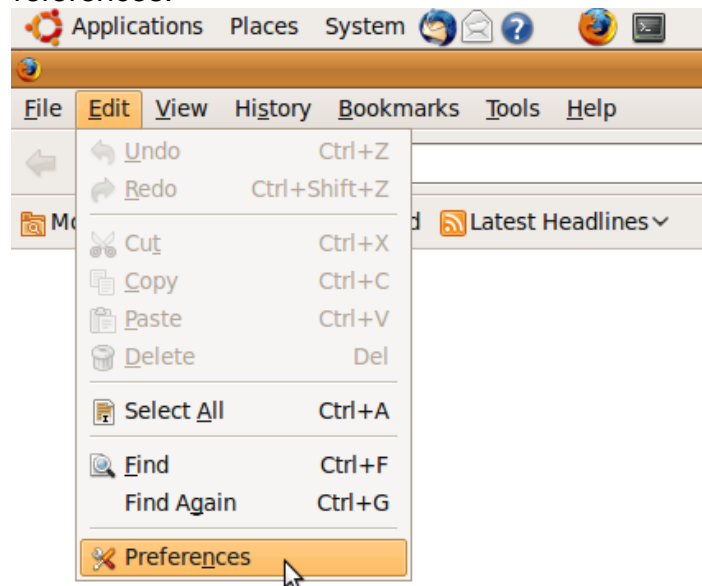
```
"export SCINTERFACE=/tmp/cmP11.log"
```

in the environment variable configuration file

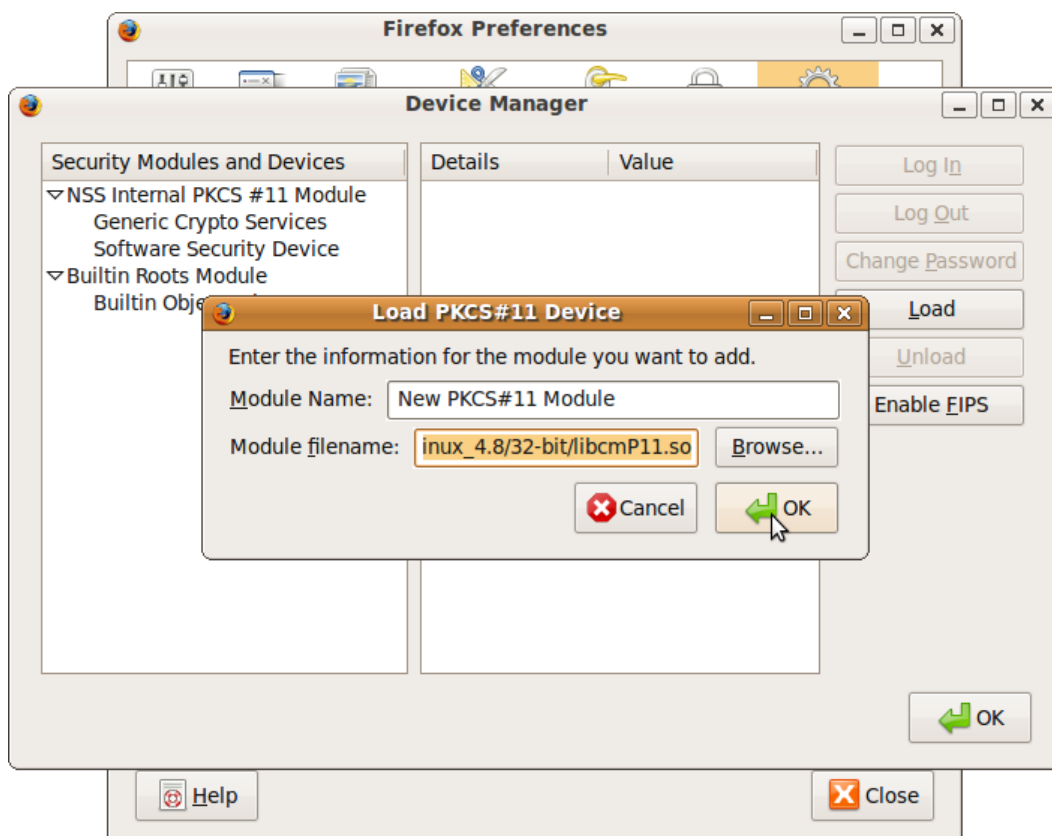
```
/etc/profile
```

How to configure Firefox to use Charismathics PKCS#11 library

1. Open Firefox.
2. Go to Edit – Preferences.

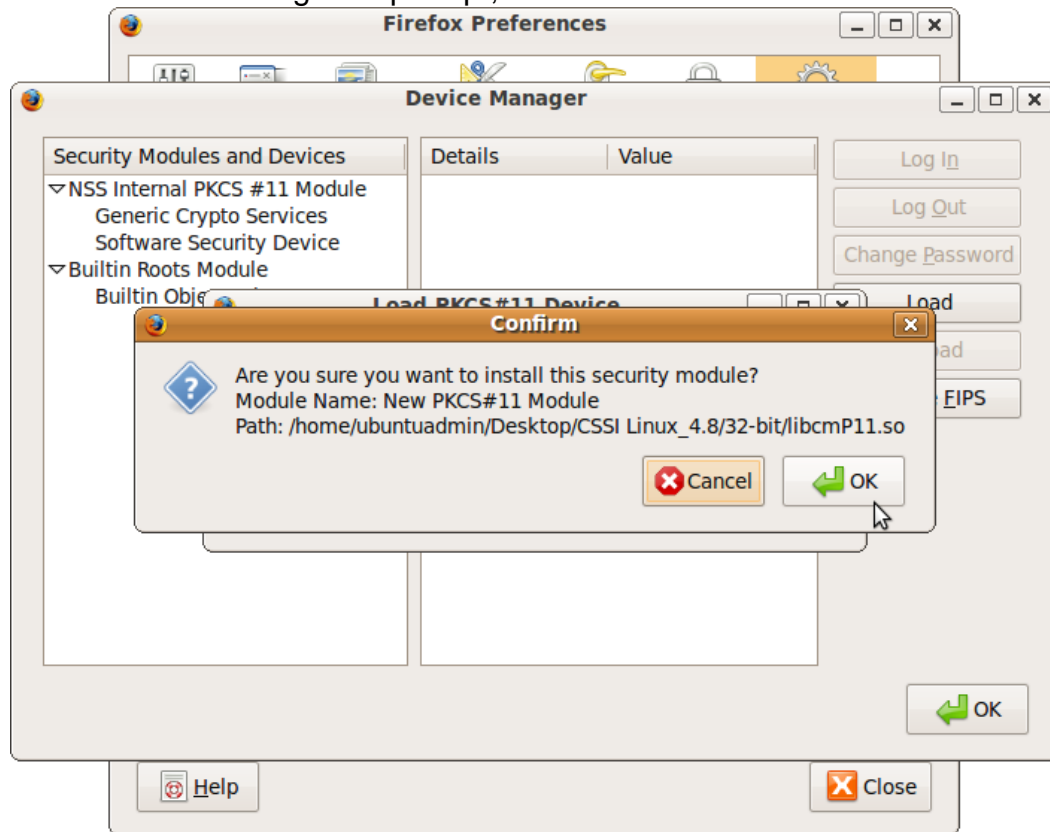


3. Select Advanced – Encryption tab – click on Security Devices.
4. Click on Load – Browse. Locate and select libcmP11.so and click on Open.

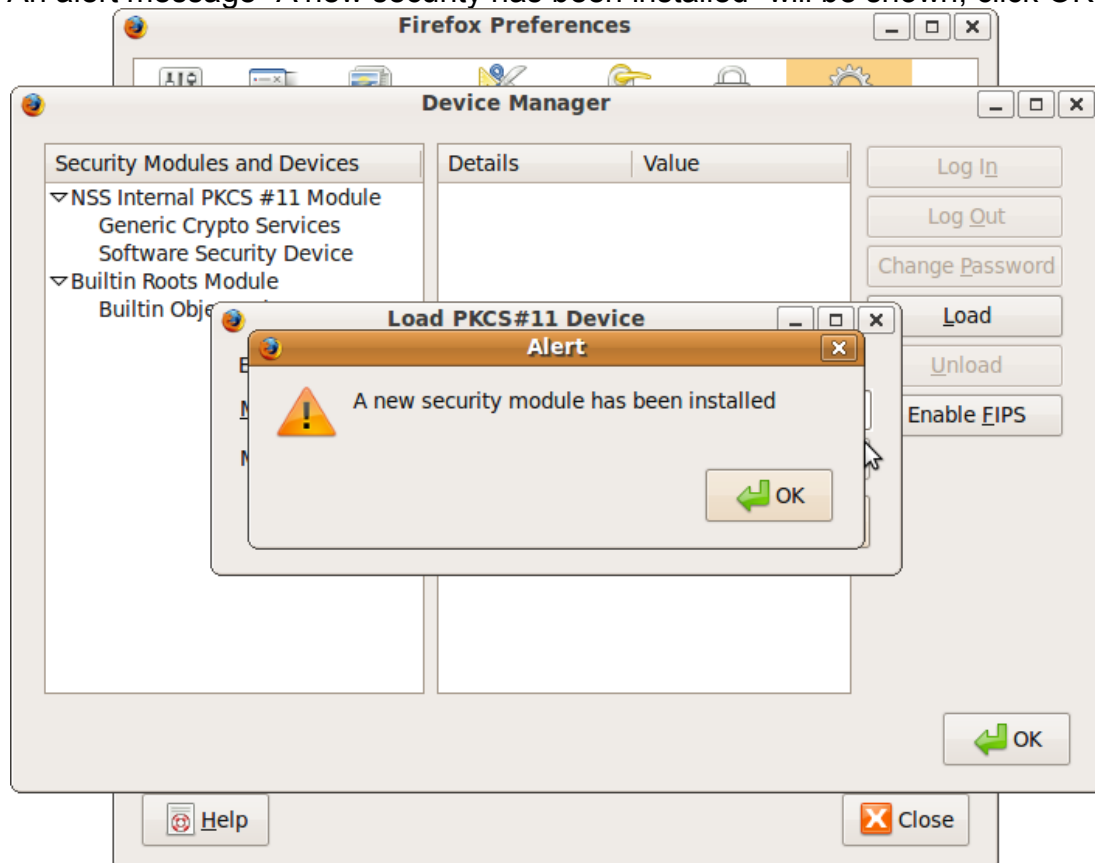


5. Click on OK.

6. A confirmation message will prompt, click OK.

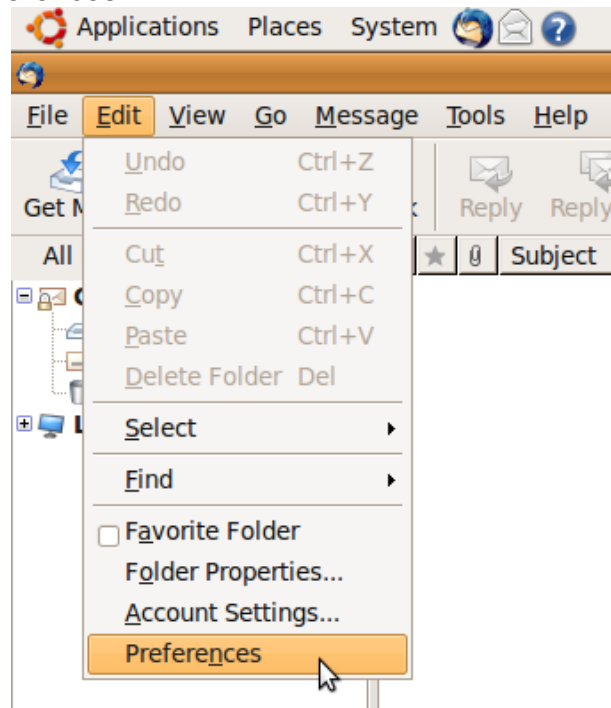


7. An alert message "A new security has been installed" will be shown, click OK.



How to configure Thunderbird to use Charismathics PKCS#11 Library

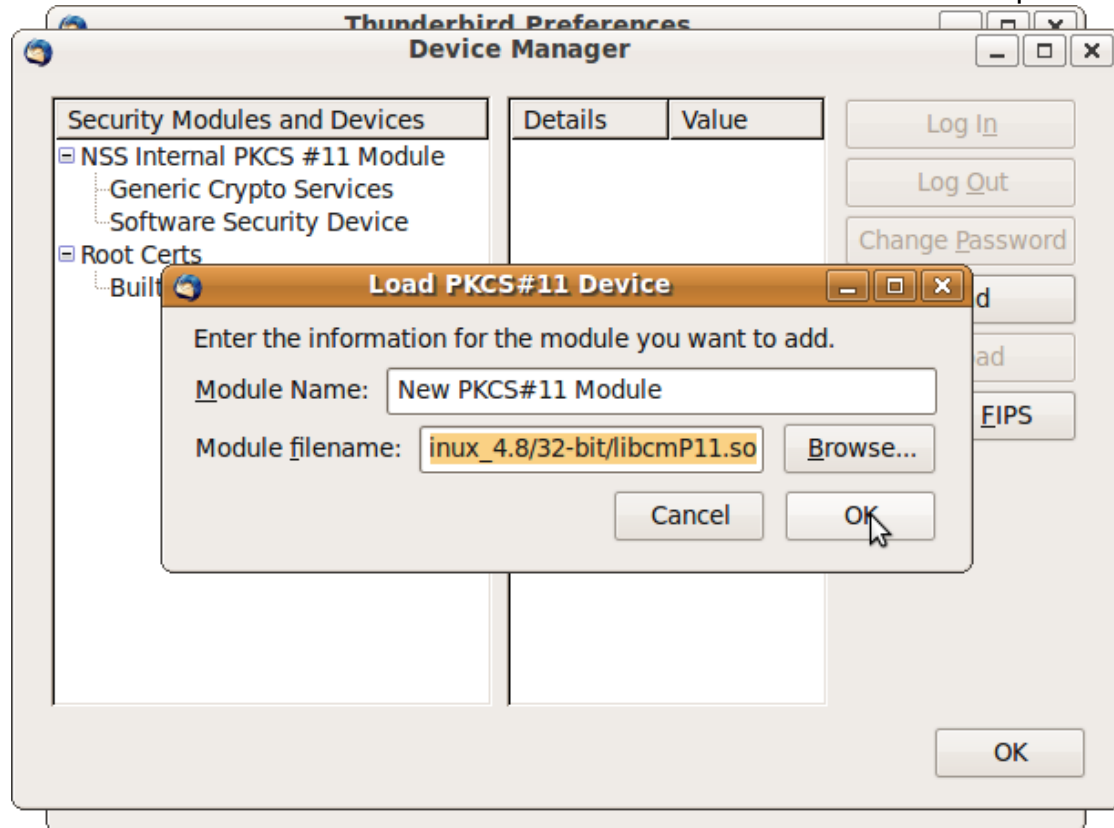
1. Open Thunderbird.
2. Go to Edit – Preferences.



3. Select Advanced – Certificates tab – click on Security Devices.

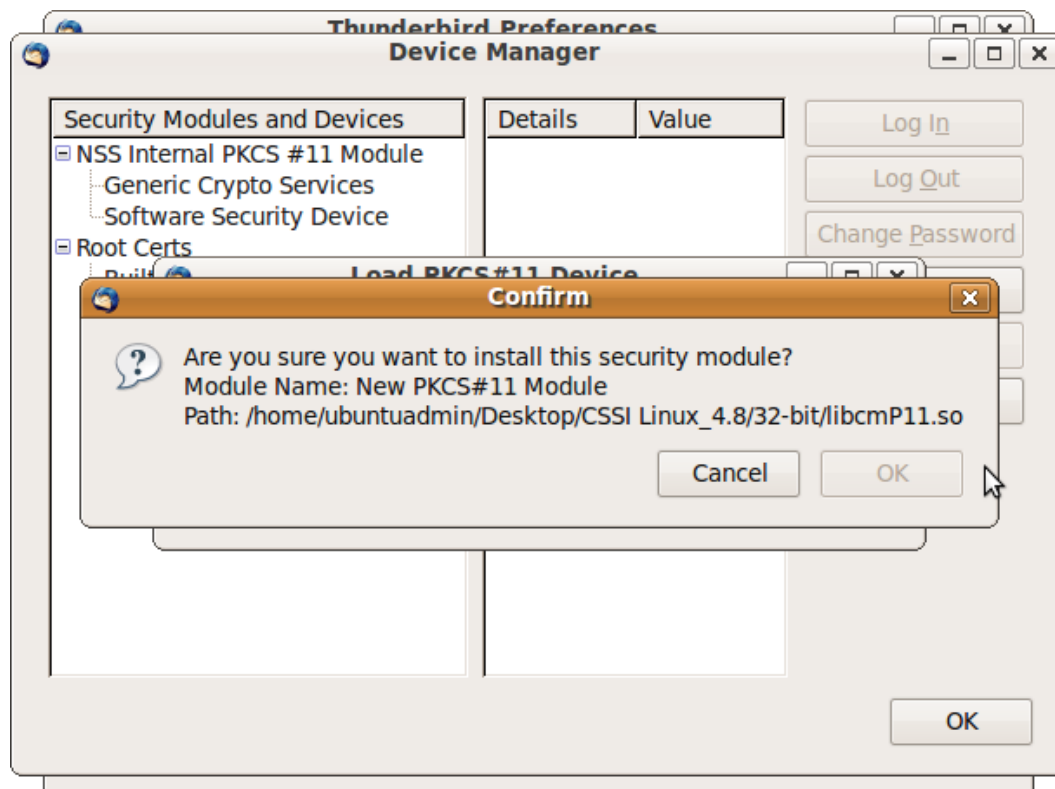


4. Click on Load – Browse. Locate and select libcmP11.so and click on Open.



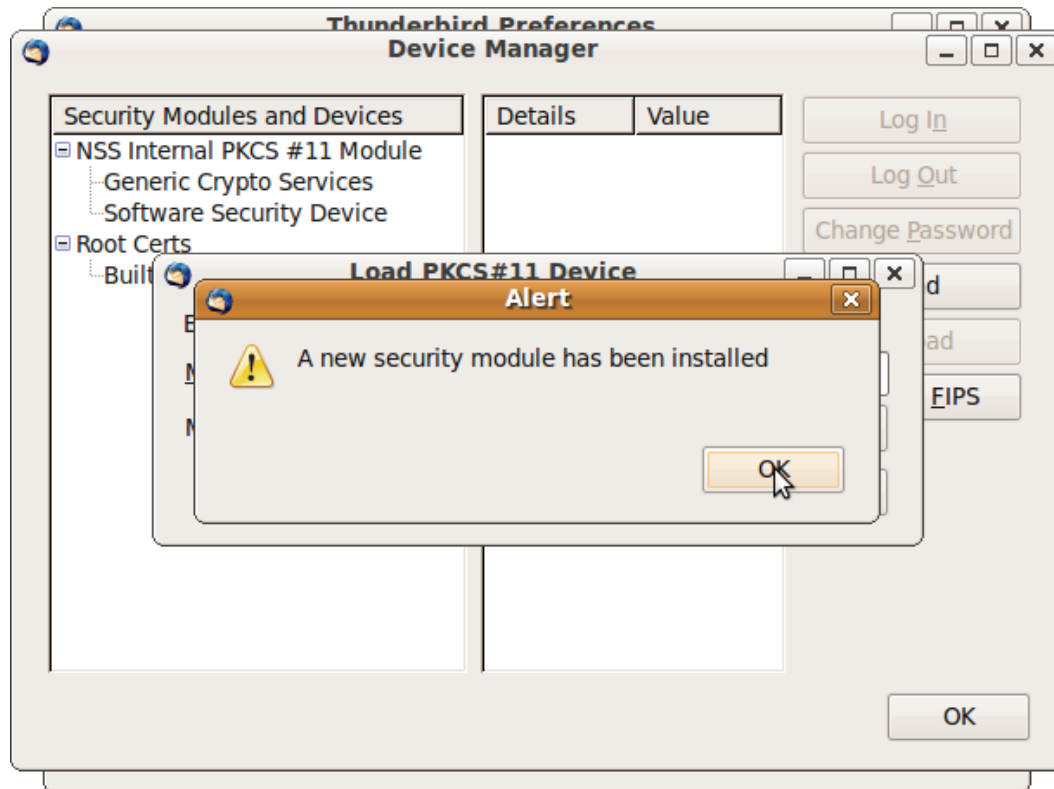
5. Click on OK.

6. A confirmation

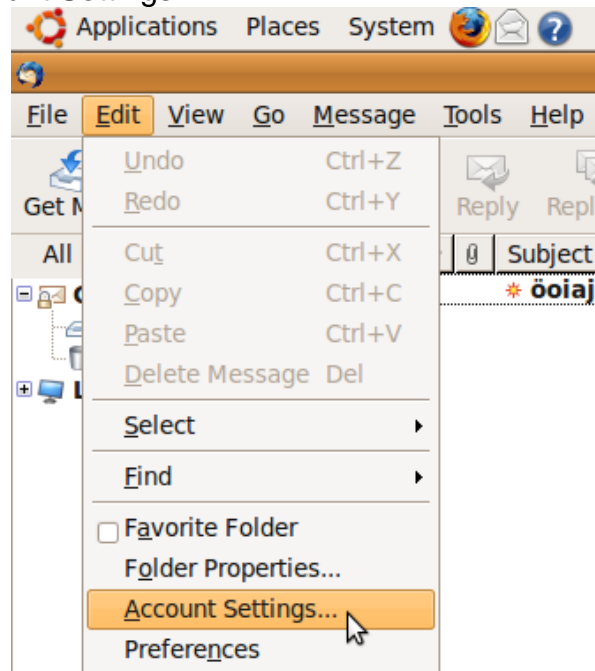


ation message will prompt, click OK.

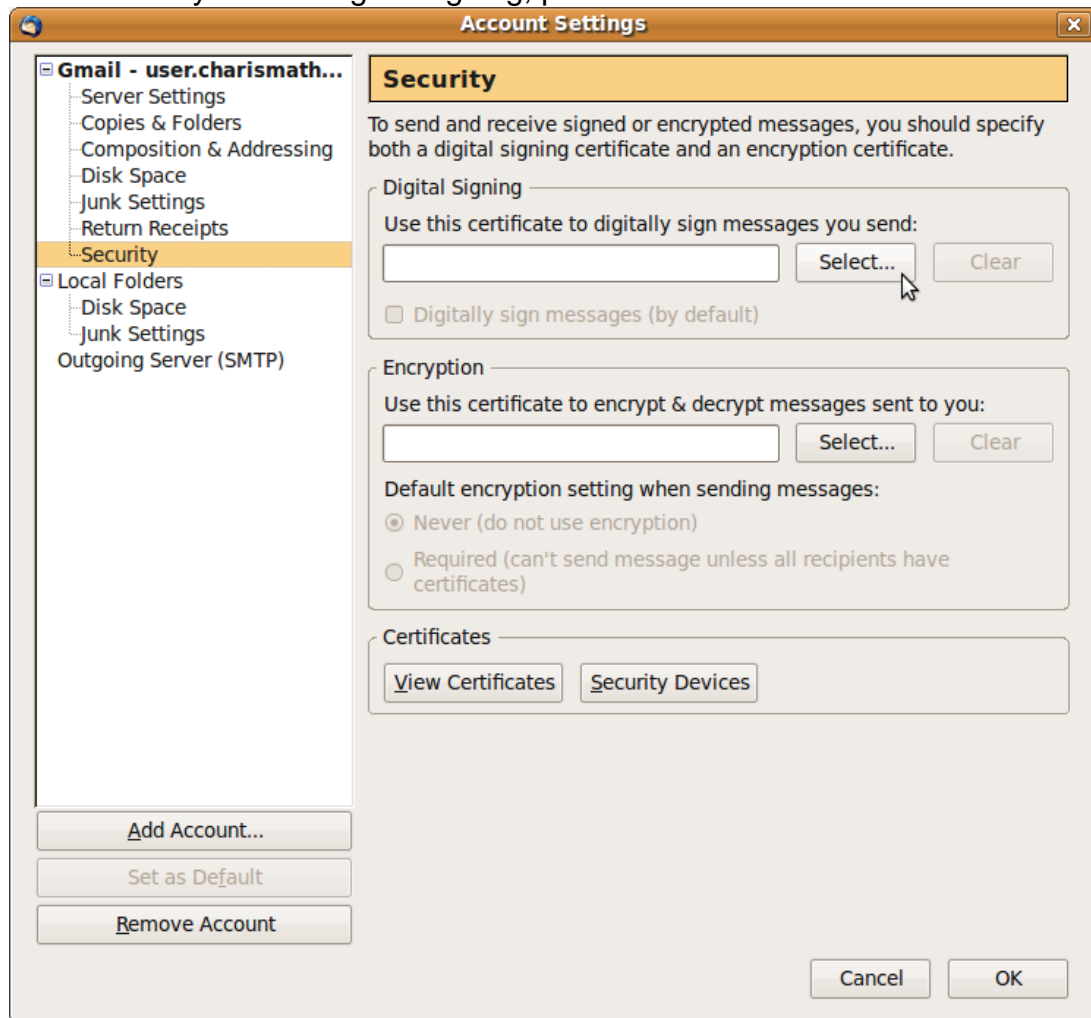
7. An alert message “A new security has been installed” will be shown, click OK.



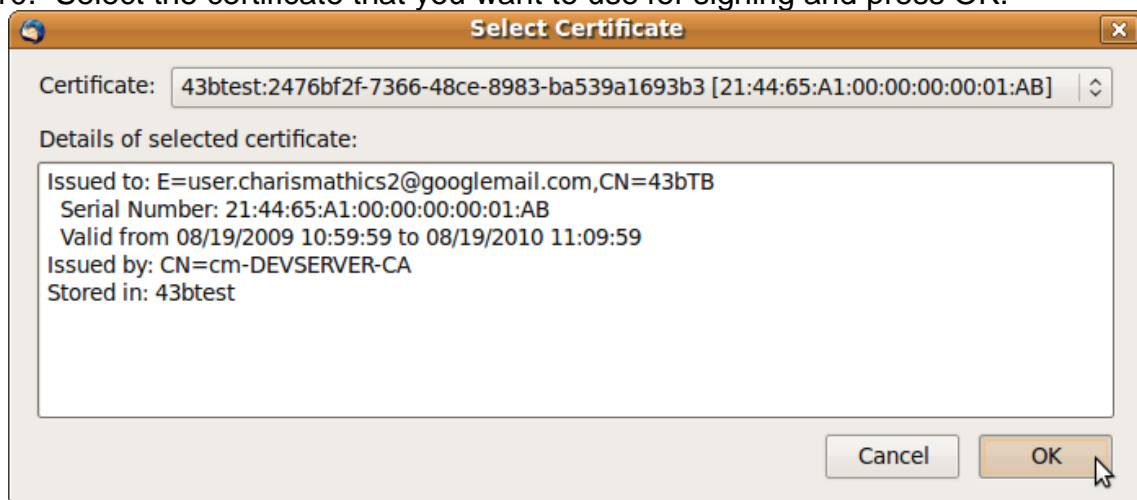
8. Go to Edit – Account Settings.



9. Go to Security. Under Digital Signing, press Select.



10. Select the certificate that you want to use for signing and press OK.



11. A message will prompt asking if you want to use the same certificate for encryption and decryption of messages. Press OK.

