



Charismathics Smart Security Interface

Version 5.0

Linux – 64 Bit

Installation:

Manual Installation:

Copy the module (libcmP11.so) and CSSI User tool to any location you like.

Charismathics PKCS11 Library for Linux:

The shared library libcmP11.so was built on Fedora 14 (Linux kernel 2.6.35) with using gcc 4.5.

Note:

- Please check the shared library dependencies of libcmP11.so on your platform and make sure all dependencies are present on your system.
- On 64-bit RHEL4 the following dependences are needed:

```
# ldd -r libcmP11.so
libpcsc-lite.so.1 => /usr/lib64/libpcsc-lite.so.1 (0x00002b4748085000)
libdl.so.2 => /lib64/libdl.so.2 (0x00002b474828f000)
libpthread.so.0 => /lib64/libpthread.so.0 (0x00002b4748493000)
libz.so.1 => /usr/lib64/libz.so.1 (0x00002b47486af000)
libstdc++.so.6 => /usr/lib64/libstdc++.so.6 (0x00002b47488c3000)
libm.so.6 => /lib64/libm.so.6 (0x00002b4748bc3000)
libgcc_s.so.1 => /lib64/libgcc_s.so.1 (0x00002b4748e47000)
libc.so.6 => /lib64/libc.so.6 (0x00002b4749055000)
/lib64/ld-linux-x86-64.so.2 (0x00002b4747379000)
```

Tested Operating Systems

- RedHat Enterprise Linux Client Release 5.3 64-bit

Supported Applications

- SSL-Authentication with smart card (Mozilla Firefox)
- PKCS#11 Interface in Mozilla Firefox
- E-Mail-Security per smart cards with Mozilla Thunderbird

Log File

If you want to create a logfile, then you should specify the environment variable SCINTERFACE with the wished filename and path.

For example:

```
#export SCINTERFACE=/tmp/cmP11.log
```

or add a line

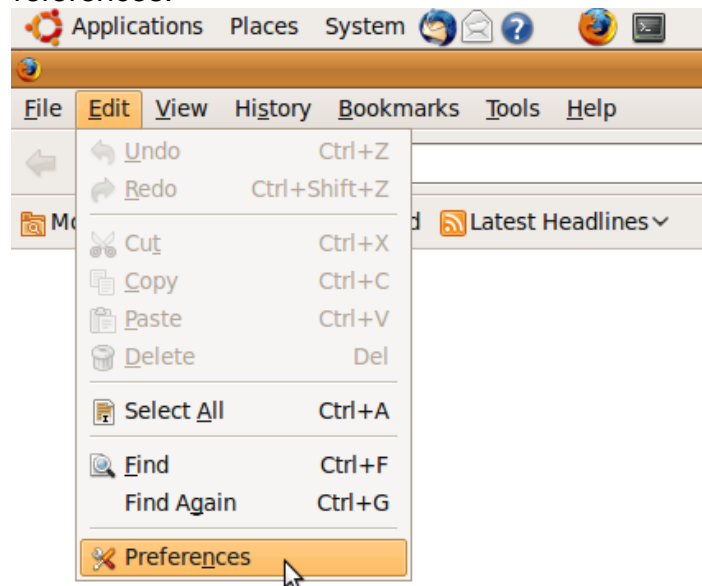
```
"export SCINTERFACE=/tmp/cmP11.log"
```

in the environment variable configuration file

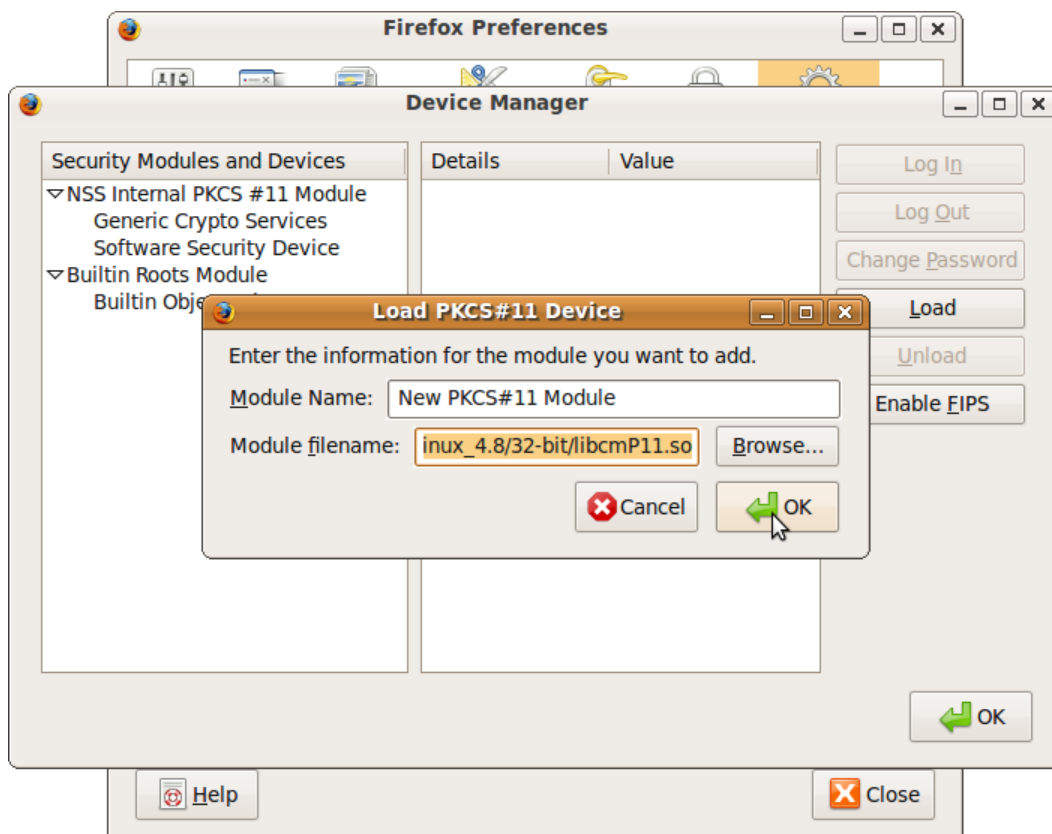
```
/etc/profile
```

How to configure Firefox to use Charismathics PKCS#11 library

1. Open Firefox.
2. Go to Edit – Preferences.

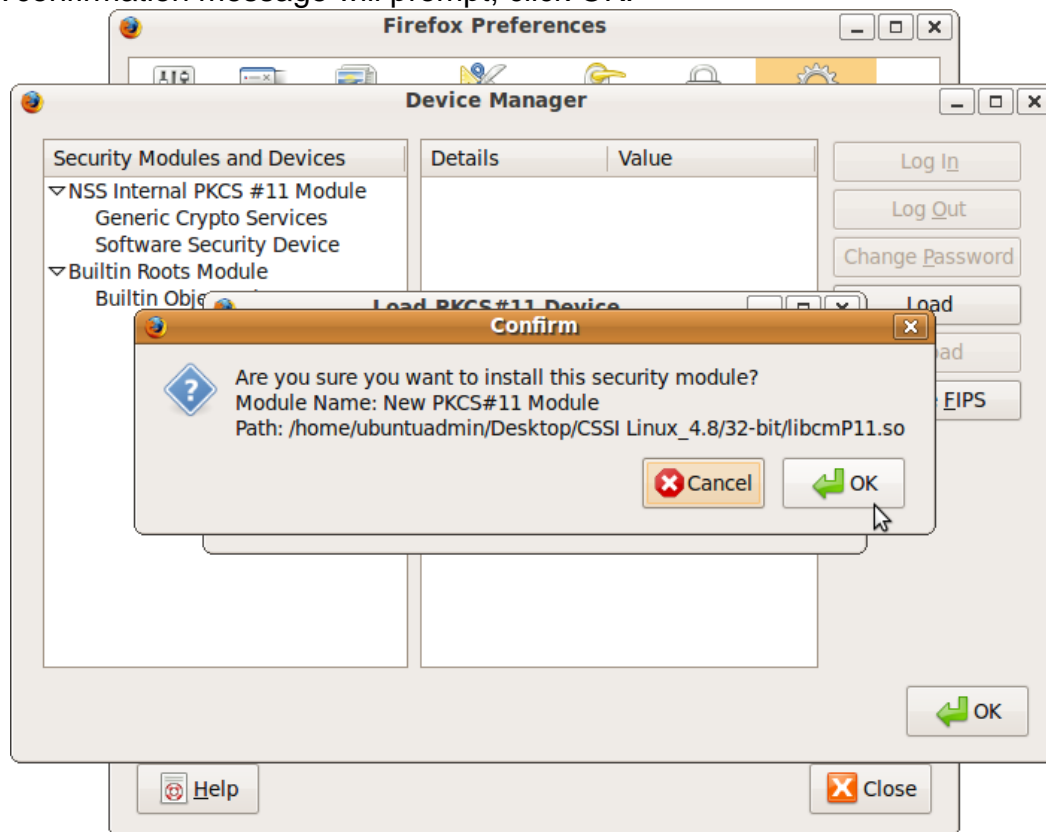


3. Select Advanced – Encryption tab – click on Security Devices.
4. Click on Load – Browse. Locate and select libcmP11.so and click on Open.

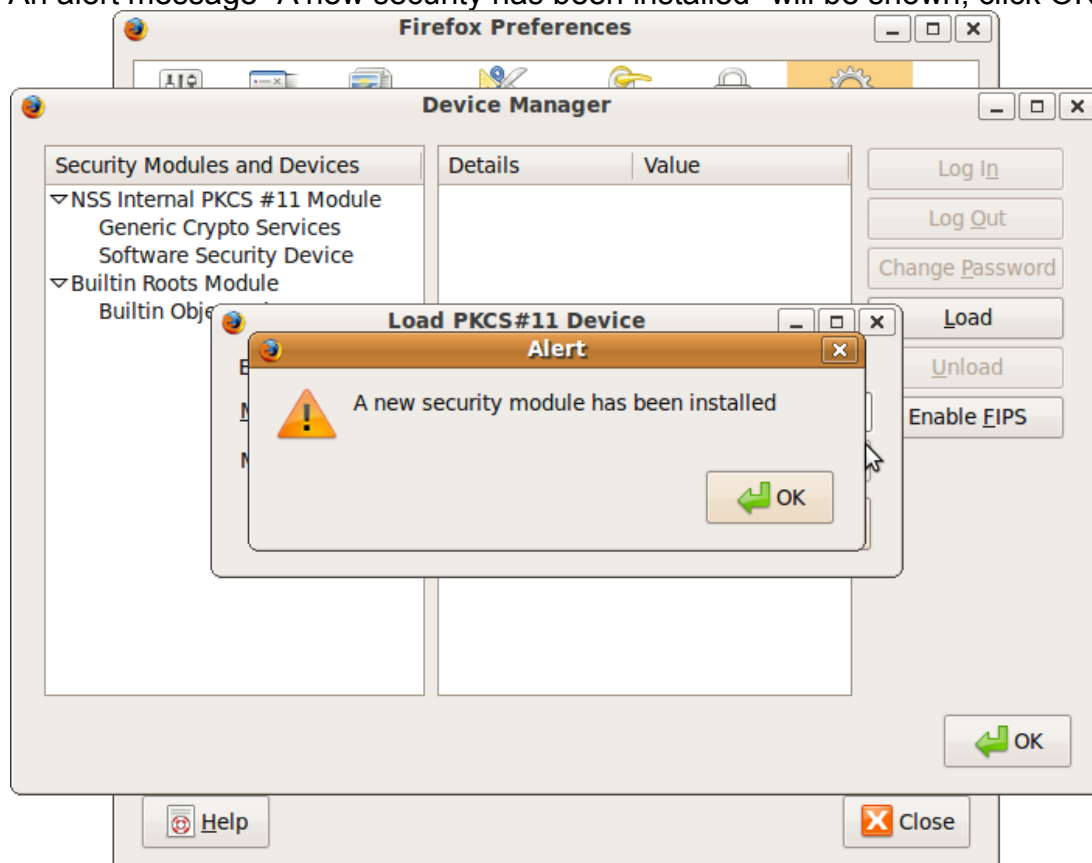


5. Click on OK.

6. A confirmation message will prompt, click OK.

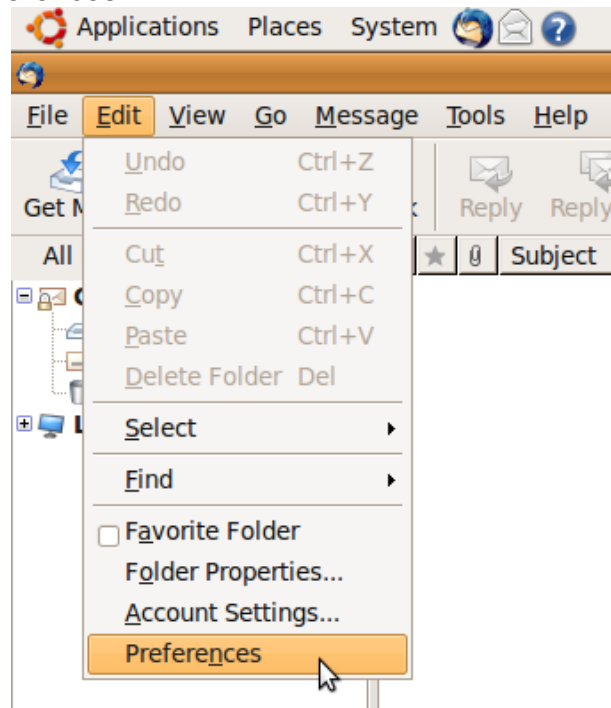


7. An alert message "A new security has been installed" will be shown, click OK.

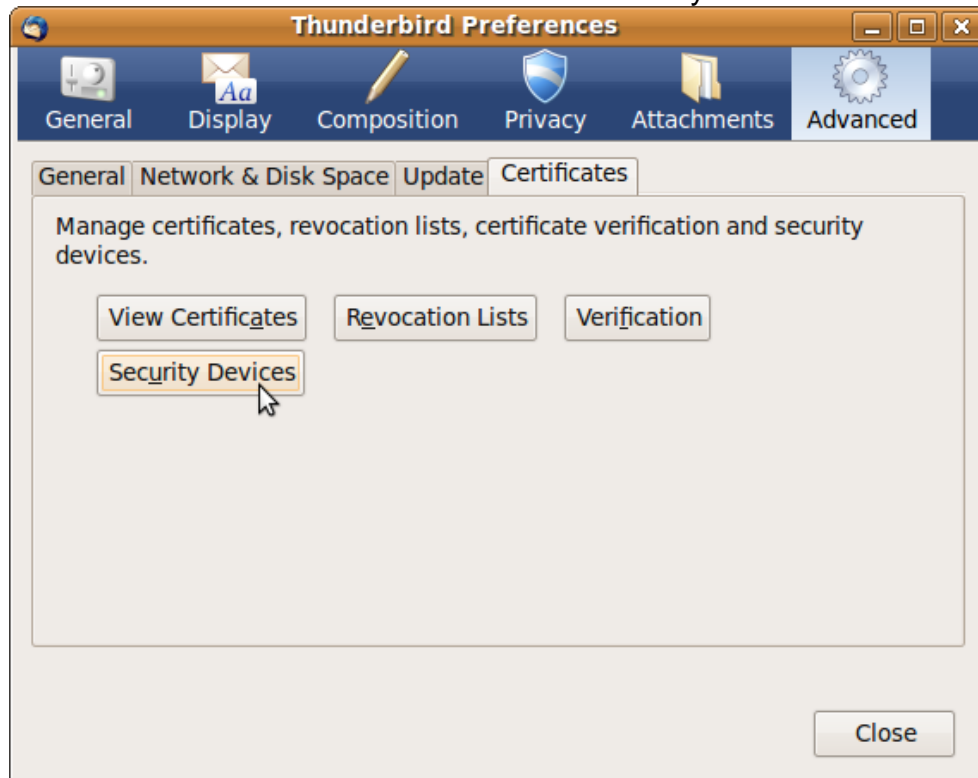


How to configure Thunderbird to use Charismathics PKCS#11 Library

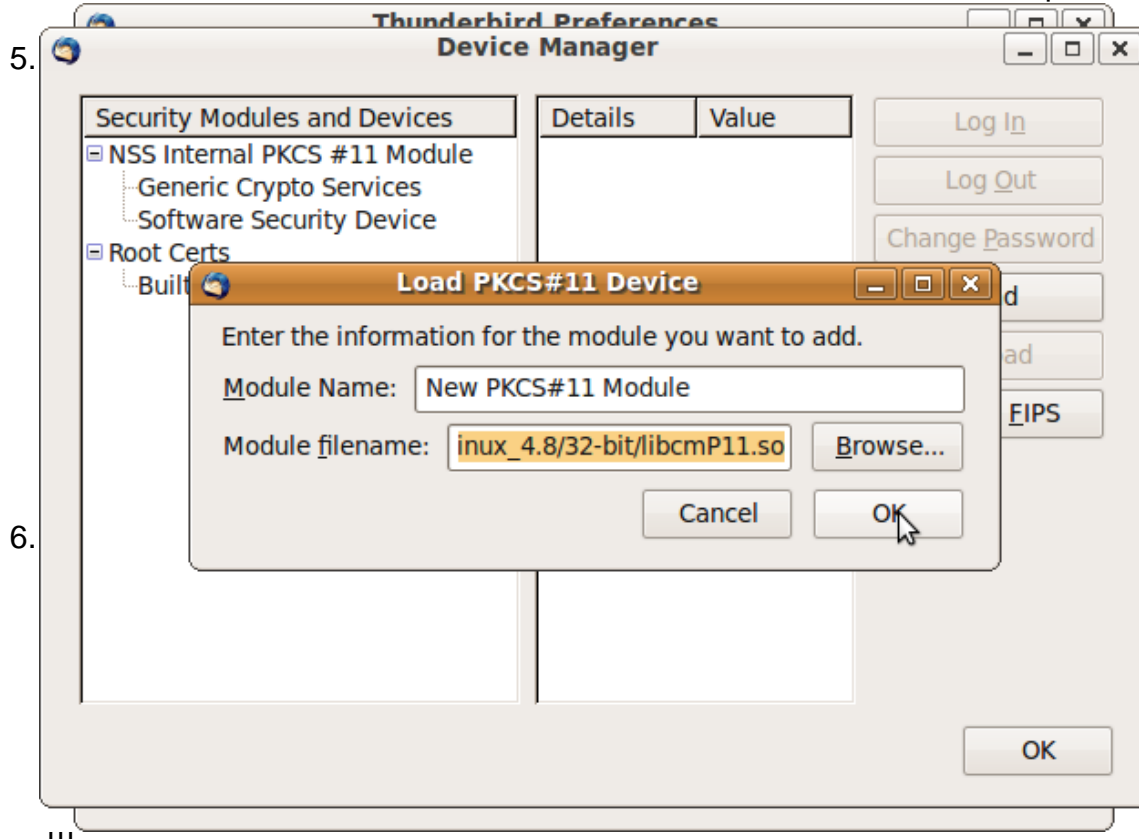
1. Open Thunderbird.
2. Go to Edit – Preferences.



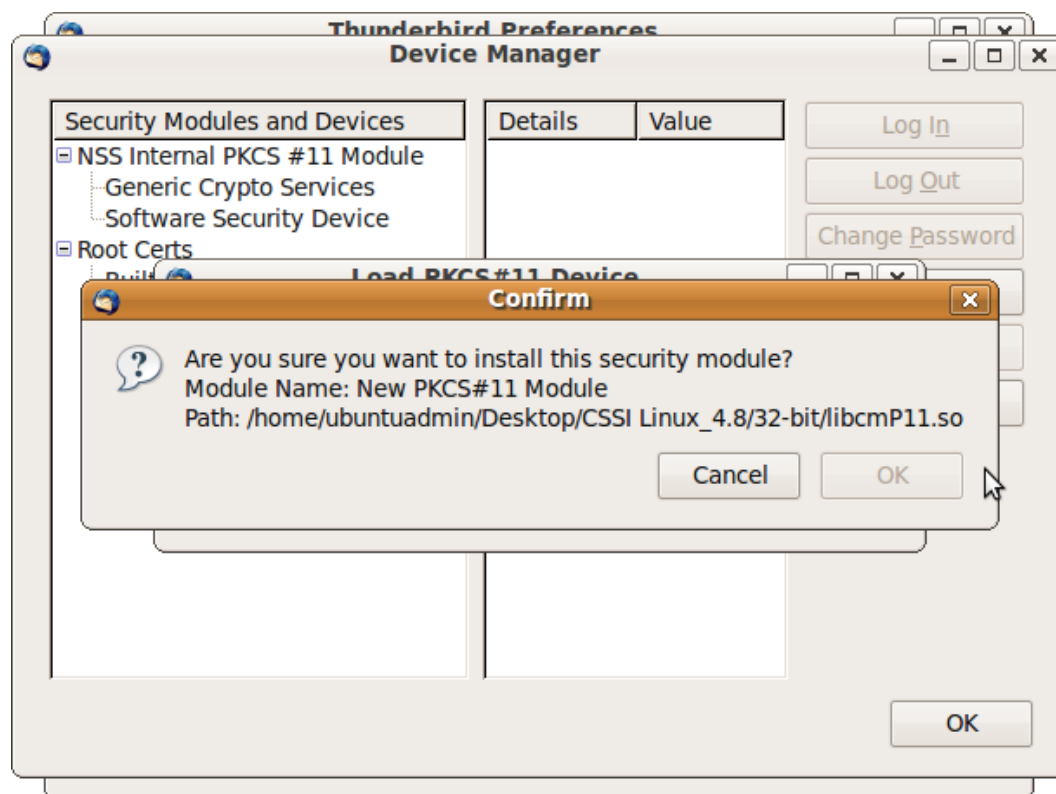
3. Select Advanced – Certificates tab – click on Security Devices.



4. Click on Load – Browse. Locate and select libcmP11.so and click on Open.

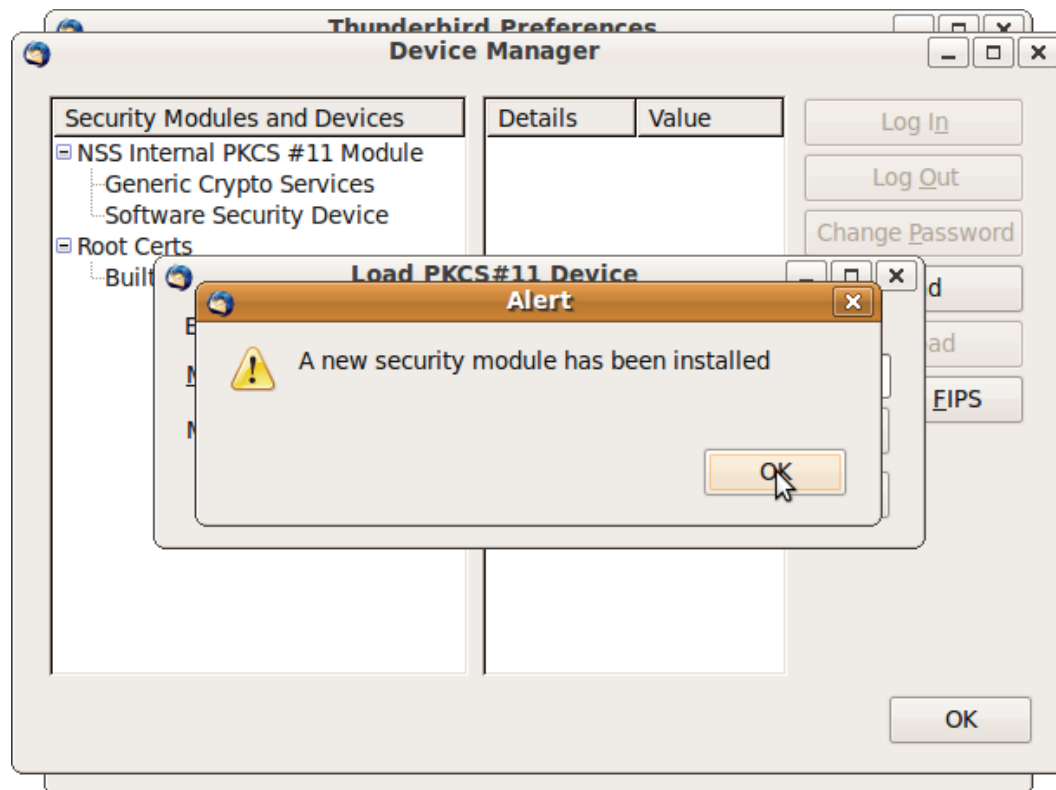


6.

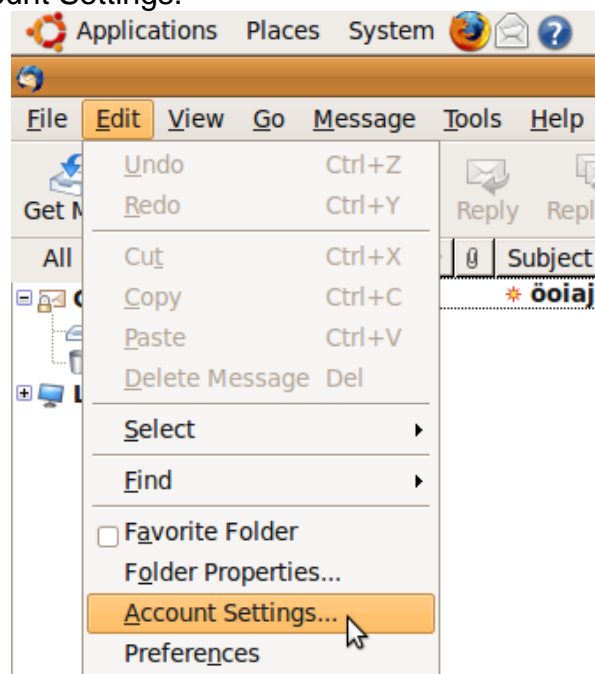


ation message will prompt, click OK.

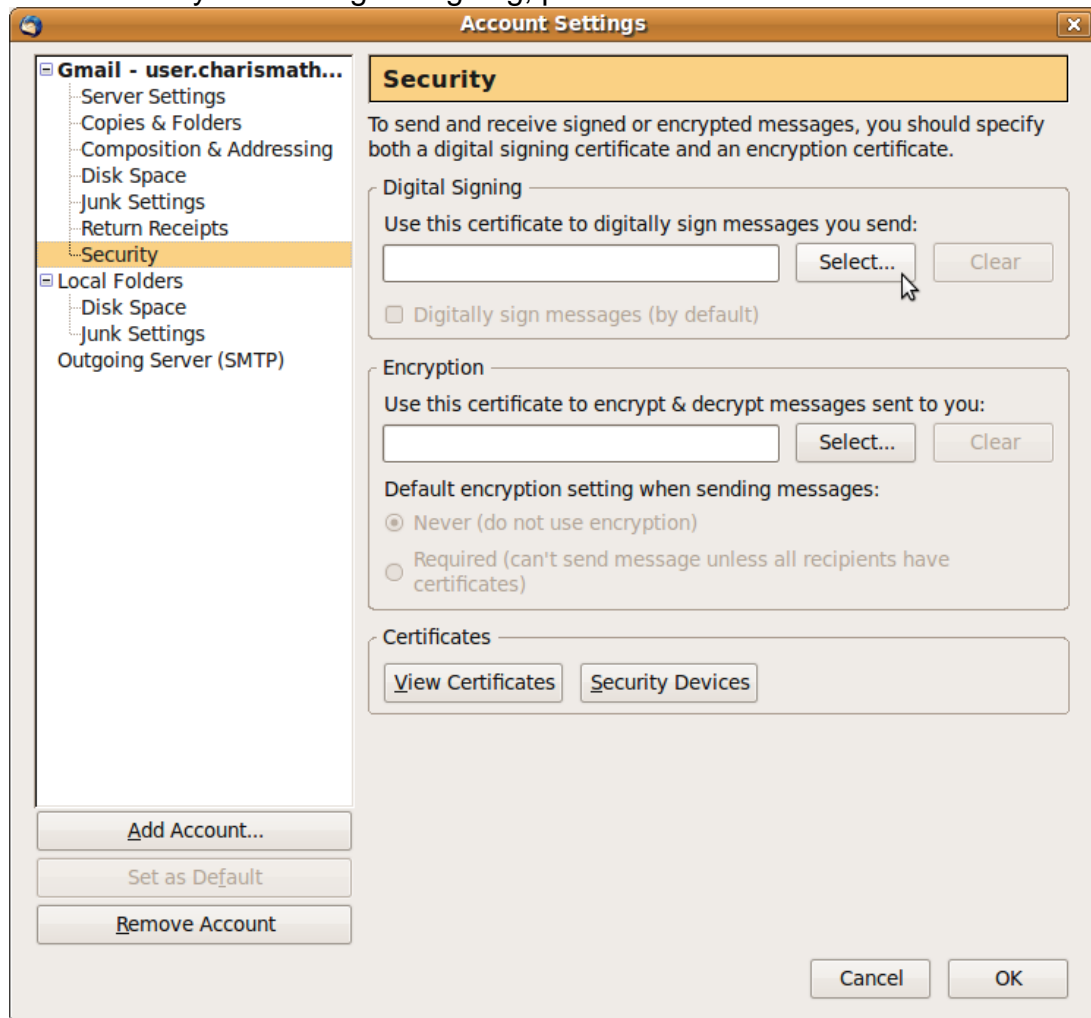
7. An alert message “A new security has been installed” will be shown, click OK.



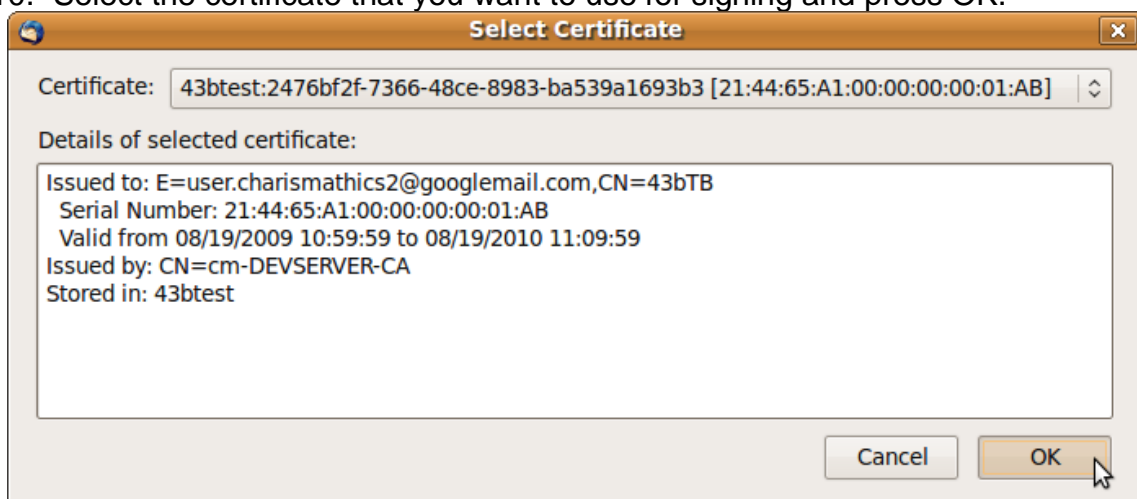
8. Go to Edit – Account Settings.



9. Go to Security. Under Digital Signing, press Select.



10. Select the certificate that you want to use for signing and press OK.



11. A message will prompt asking if you want to use the same certificate for encryption and decryption of messages. Press OK.

